



HYDRAULIC HAND PALLET TRUCK (MQ019)

INSTRUCTION MANUAL



WARNING!

- Read and understand the entire operator's manual before using the pallet truck.
- Don't load pallet truck beyond rated capacity of 11,000 lbs.
- Secure load before transporting.
- Keep the load centered on the pallet.
- Don't operate loaded pallet truck on ramps or inclines.
- Always wear appropriate safety shoes.
- Never leave a loaded pallet truck unattended in the raised position; always lower load to the floor.

PALLET TRUCK ASSEMBLY

Note: Individual trucks are assembled and ready to use. Pallet trucks purchased in crate quantities (6 units to a crate) require some assembly.

Tools needed for assembly: hammer, flat screwdriver, 14mm wrench

To attach handle assembly to the frame:



1.

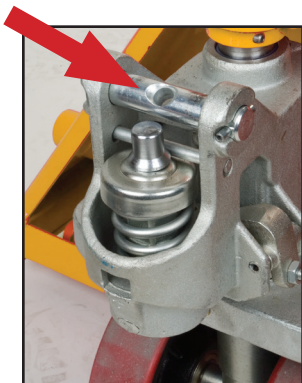
***** IMPORTANT - SAFETY *****

Verify that spring safety pin is in place. The pin should be well rested in the holes situated on each side of the pump housing. If the safety pin is not rested properly in one of the holes, put pressure on the spring using a "C" clamp pushing down on the pump stem. Once pressure is relieved on the pin, reinsert properly and remove clamp slowly,



2.

Insert handle pin into corresponding holes and using a hammer, drive in one spring pin on one side only.



3.

Insert handle pin without the handle and verify that the center hole is facing you.

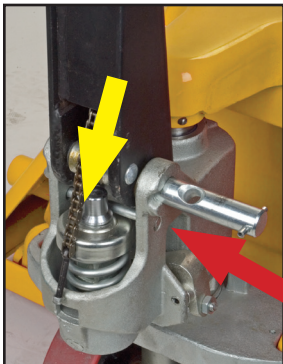


4.

If handle pin's center hole is facing away from you, insert pin from other side.

***** IMPORTANT - FACT *****

The up/down lever's chain passes through this center hole. If left this way, the chain will have an "S" form and be under too much tension, making the up/down lever difficult to use accurately.



5.

*** IMPORTANT - CHAIN***

Before this step, make sure to feed the chain on the outside of the piston stem roller (see yellow arrow). If left in its proper position, it will not be possible to insert the handle pin and chain, breakage may occur.

Align handle holes with pump housing holes and push through handle pin (see red arrow)



6.

Make sure that handle pin is completely through the handle and resting on the other side.



7.

Pull down on the handle to release the tension on the safety pin. CAREFULLY remove the safety pin.

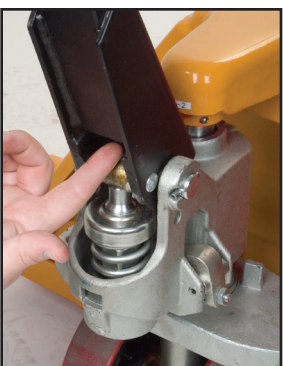


8.

Feed the chain and nut first back inside the handle THROUGH the handle pin's center hole.

***IMPORTANT - TIP ***

Release the up/down lever to its lowest position to make the process easier.



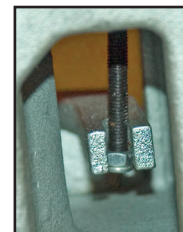
9.

Once the chain is in the proper position, check to see that it moves freely and that it is not obstructed.



10.

Using both hands, push on the valve cam to raise the hook inside the housing and feed the end of the chain in the cam. (see image at right)



11.

Pump the lever a few times to raise the forks. Put the up/down lever to its NEUTRAL position. Using a 14mm wrench and a flat screwdriver, adjust the valve cam so that the forks don't lower or rise (if handle is pumped) at this position.



12.

*** IMPORTANT - FINAL CHECK ***

Test all the features of the pallet truck before this step. The handle should be pumped with full strokes to prime and eliminate air in the system. The up/down lever should be checked at the handle's lowest position for this puts the most tension on the chain. Once the pallet truck is adjusted properly and is performing well, drive in the second spring pin using a hammer.

OPERATING PALLET TRUCK

To raise the forks, place handle lever in UP position (bottom part of the handle slot).
See Figure 2.

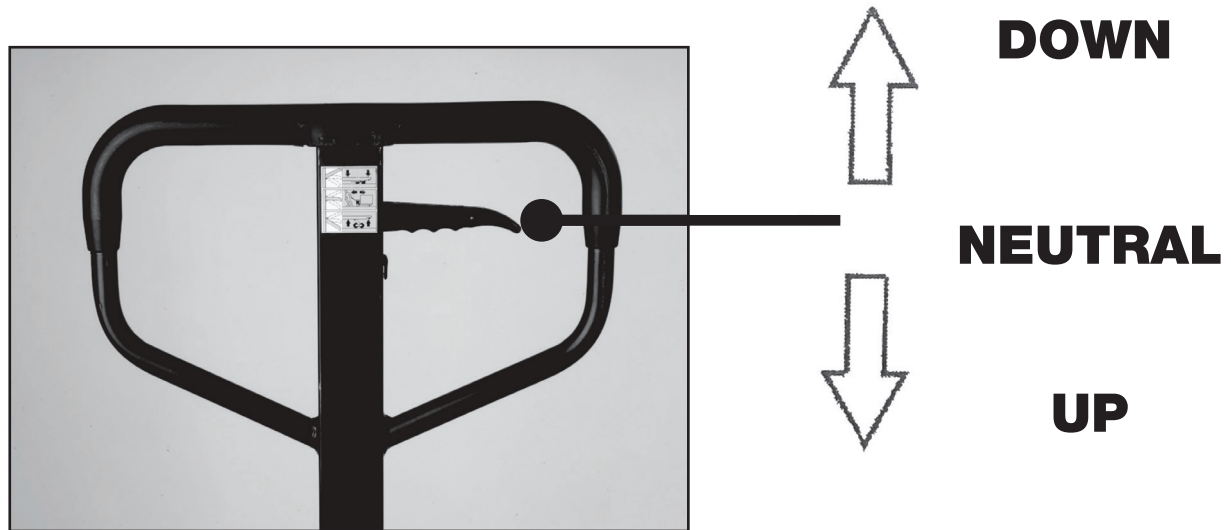


Figure 2

To lower forks, pull lever to DOWN position (upper part of the slot).
To freely move the handle, set the lever in NEUTRAL (center notch of the slot).

To lift a load:

1. Lower forks to lowest position.
2. Insert forks under load or into pallet.
3. Place lever in UP position (bottom part of the slot).
4. Move handles up and down until forks reach desired height.

To move a load:

1. Place lever in NEUTRAL position (center notch of the slot).
2. Pull or push to desired location.

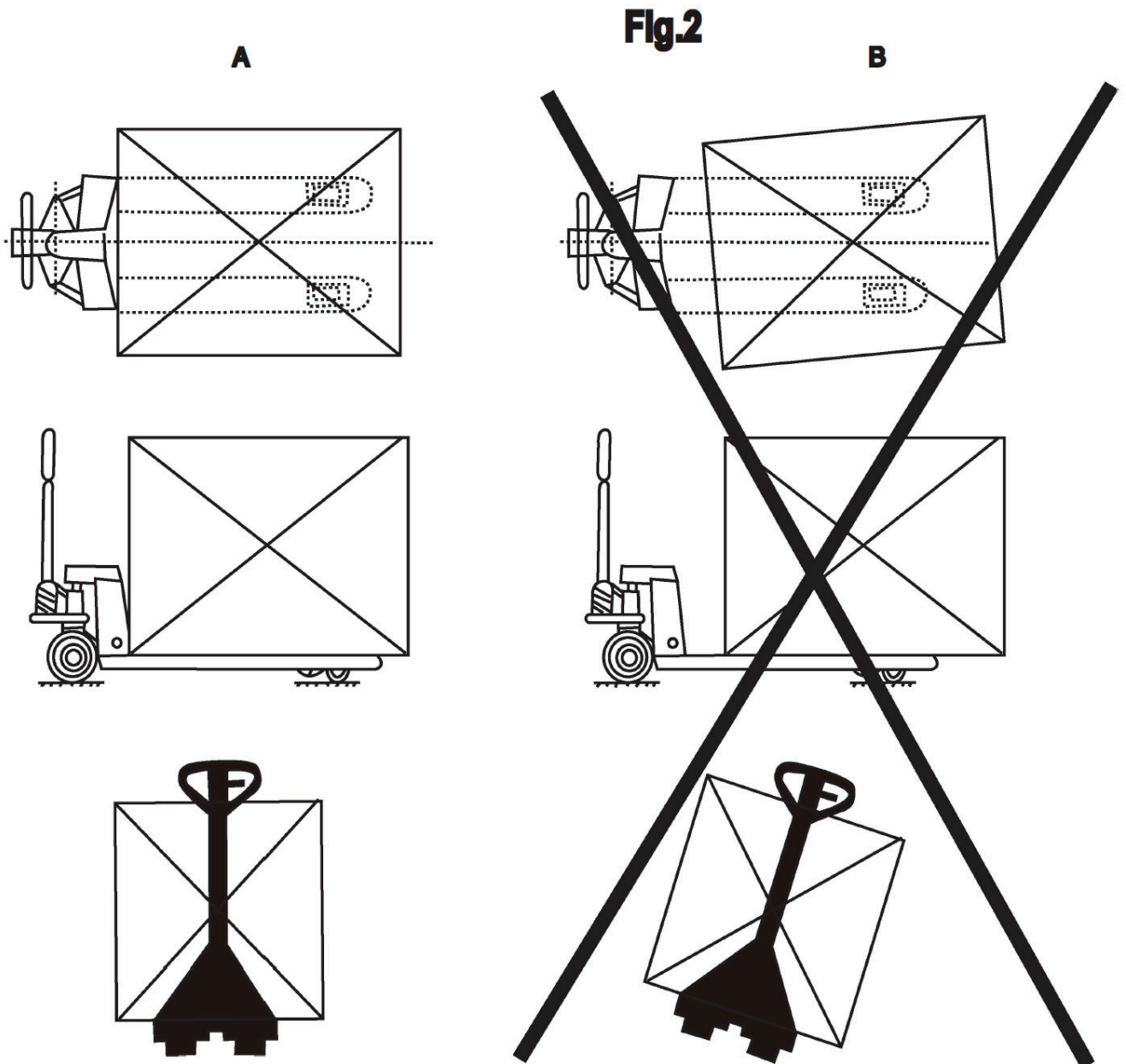
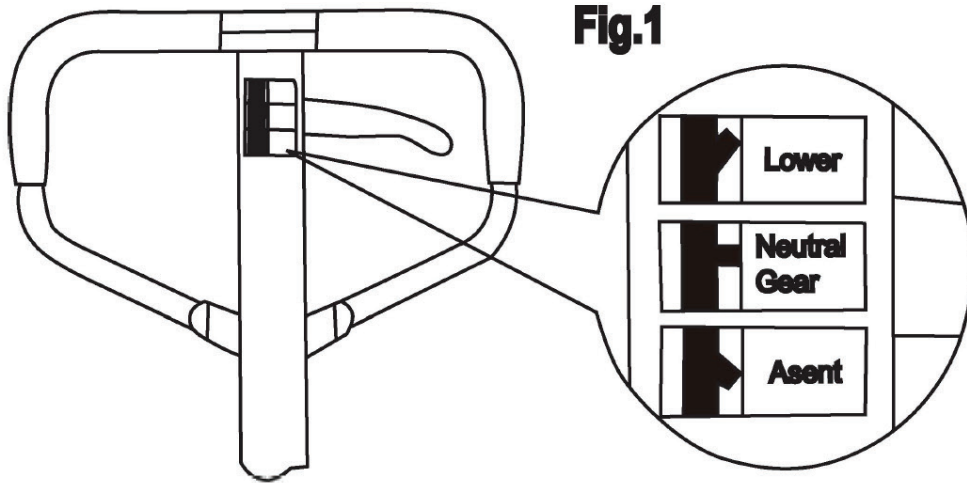
To lower a load:

1. Pull lever to the DOWN position (upper part of the slot).
2. Pull forks away from load.

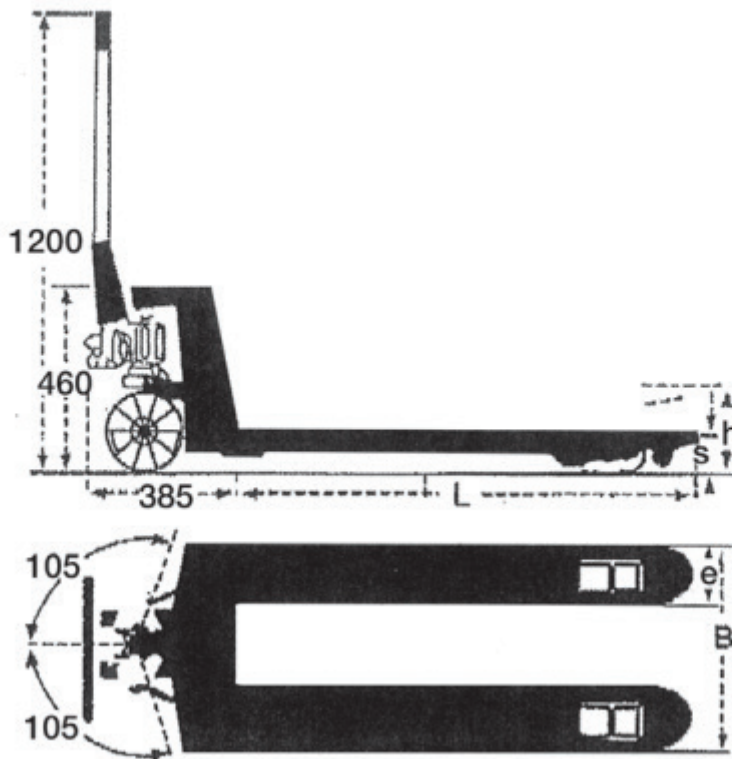
Cleaning Relief Valve:

Over time, relief valve may become clogged with debris and will not work properly. To clean relief valve, flush our hydraulic system as follows:

Pump handle quickly, raising pallet truck to full extent.
Then, quickly release pumping action.



TECHNICAL PARAMETER



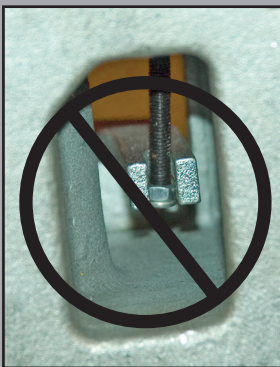
Model		Standard
		MQ019
Capacity		4400 lbs.
		2000 kg
H	Raised Height	7-7/8"
		200mm
S	Lowered Height	3-3/8"
		85mm
E	Fork Width	6-1/4"
		160mm
B	Fork Outside Distance	27"
		685mm
Steer Wheel Diameter		7"Φ x 2"
		Φ180 × 50mm
Load Wheel Diameter		3-1/8"
		80 mm

TROUBLESHOOTING

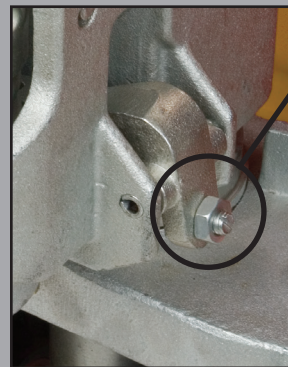
Possible problems could arise in the operation of your hydraulic pallet truck. Their probable cause(s) and corrective action(s) follow:

Condition	Probable Causes	Corrective Action
Hydraulic unit does not lift	Oil low in tank	Make sure there is no till leakage from valve and add oil.
	Steel ball not seated in hydraulic unit	See "Cleaning Relief Valve" in this manual.
	Worn O-ring in ram cylinder	Consult authorized service centre.
Once lifted truck lowers by itself	Steel ball not seated in hydraulic unit	See "Cleaning Relief Valve" in this manual.
	Worn O-ring in ram cylinder	See "Cleaning Relief Valve" in this manual.
	Relief valve not seated properly	See "Cleaning Relief Valve" in this manual.
	Relief valve not adjusted properly	Reload truck within load capacity and adjust valve by pressure adjustments crew.
	Oil leakage from each valve	Tighten plug of each valve.
Fork does not lower	Cam broken	Replace cam chain.
	UP-DOWN cam nut out of adjustment	Refer to "Adjusting UP-DOWN Cam" in this manual.
	Broken fork rods and linkage	Replace broken parts.
Lever does not set at NEUTRAL position	UP-DOWN cam nut out of adjustment	Refer to "Adjusting UP-DOWN Cam" in this manual.

Adjusting UP-DOWN Cam

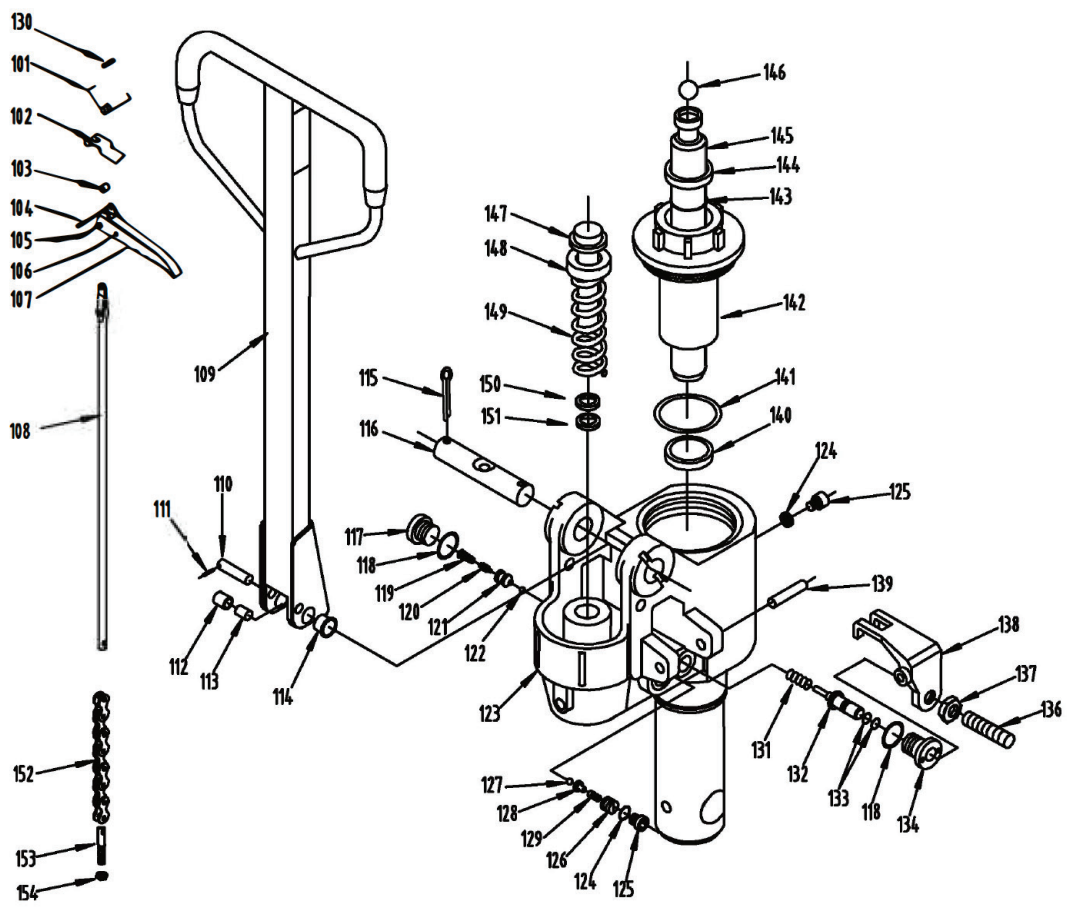
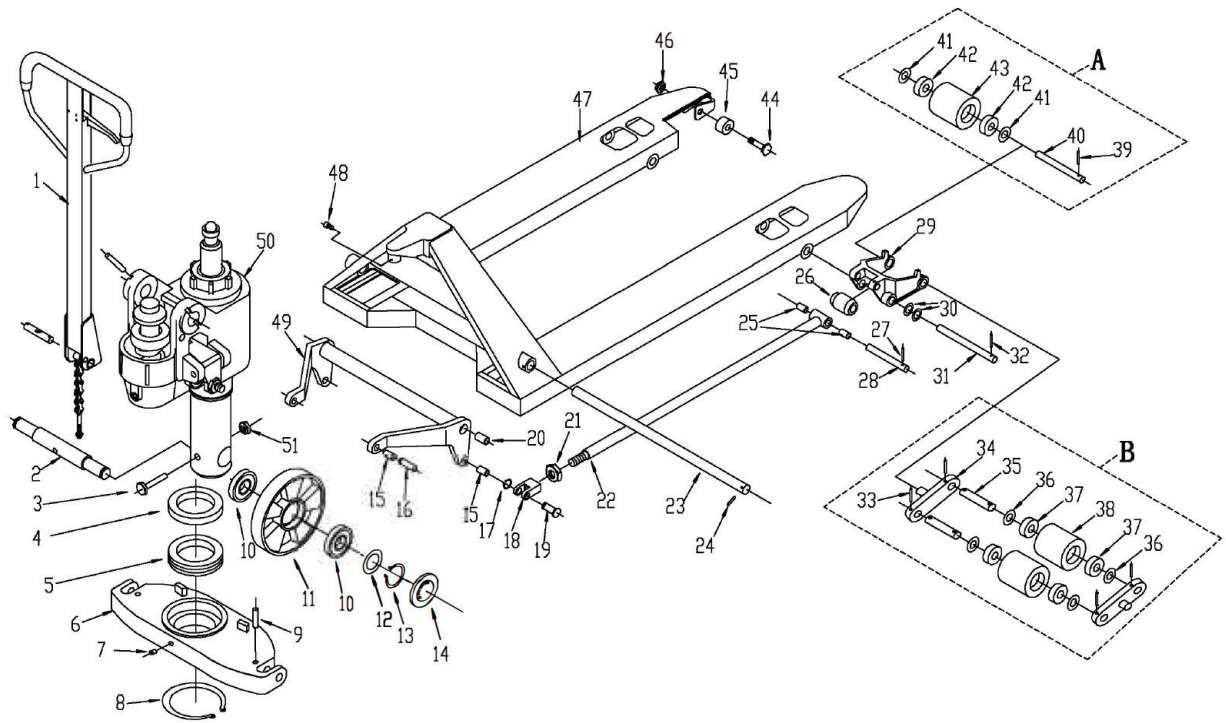


DO NOT adjust the up/down lever control using the lock nut at the end of the handle chain. If nylon locking threads are removed from the screw threads, rolling vibration will cause the nut to unscrew and fall off, leaving the up/down lever unusable.



Use proper set screw and lock nut adjustment located on the side of the pump. This feature was designed to ease the pallet truck adjustment. Tools required are: flat screwdriver and a 14mm wrench.

HYDRAULIC HAND PALLET TRUCK ASSEMBLY



PARTS LIST

Ten Part #	No.	Description	Qty
MJ552	1	Handle Assembly	1
MJ588	2	Wheel Shaft	1
	3	Screw M8x60	1
	4	Washer	1
MJ584	5	Bearing	1
	6	Base	1
	7	Nipple	1
	8	Snap Ring	1
MJ585	9	Spring Pin 5x30	2
MK984	10	Bearing 6204	4
MN256	11	Steering Wheel	2
	12	Washer	1
MJ591	13	Snap Ring	2
MJ592	14	Wheel Cap	2
MJ625	15	Bushing	4
MJ624	16	Base Pin	2
MJ626	17	Snap Ring	2
MJ627	18	Rod End	2
MJ623	19	Rod Shaft	2
MJ622	20	Bushing	2
	21	Screw Nut	2
	22	Push Rod	2
	23	Rocker Shaft	1
MJ617	24	Spring Pin 6x35	1
	25	Bushing	4
MJ642	26	Wheel	2
	27	Spring Pin 5x30	2
MJ631	28	Push Shaft	2
	29	Wheel Bracket	2
	30	Washer	8
MJ634	31	Axle	2
MJ632	32	Spring Pin 5x30	2
MK987	33	Spring Pin 6x00	2
MK986	34	Balance Arm	2
	35	Wheel Shaft	4
MK983	36	Washer	8
	37	Bearing 6204	8
MK985	38	Tanden Loading Wheel	4
	39	Spring Pin 5x30	2
	40	Wheel Shaft	2
	41	Washer	4
	42	Bearing 6204	4
	43	Single Loading Wheel	2
MJ615	44	Hex Bolts	2
MJ614	45	Wheel	2
MJ613	46	Nut	2
	47	Fork	2

Ten Part #	No.	Description	Qty
MJ643	48	Hex Nut	1
	49	Rocker Arm	1
	50	Pump Assembly	1
	51	Nut	1
	A	Single Loading Wheel	2
	B	Tanden Loading Wheel	2
	114	Bushing	1
MJ572	115	Spring Pin 5x40	2
	116	Shaft	1
	117	Plug	1
	118	Washer Ring	2
	119	Spring	1
	120	Valve Needle	1
	121	Valve Bushing	1
	122	Steel Ball	1
	123	Pump	1
	124	Washer Ring	2
	125	Bolt	1
	126	Pressure Plug	1
	127	Steel Ball	1
	128	Spring Base	1
	129	Spring	1
MJ553	130	Spring Pin	1
	131	Oil Pin	1
	132	Oil Rod	1
	133	O-Ring	1
	134	Plug	1
	136	Bolt	1
	137	Hex Nut	1
	138	Control Shaft	1
MJ582	139	Spring Pin 8x50	1
	140	Y-Ring 0	1
	141	O-Ring	1
	142	Pump Cap	1
	143	O-Ring	1
	144	Dust Ring	1
	145	Piston Rod	1
MJ571	146	Steel Ball 18	1
	147	Plunger	1
	148	Spring Cap	1
	149	Spring	1
MJ576	150	Dust Ring	1
MJ577	151	Y-Ring	1
MJ561	152	Chain	1
	153	Bolt	1
MJ562	154	Nut	1